

# *Act*

The products listed in this catalog are available as of Mar 2022. Please note that specifications, dimensions, and colors are subject to change without notice. The colors of the actual products may differ somewhat from the colors shown in the catalog, depending on printing conditions.

**ITOKI CORPORATION**  
International Business Department  
2-5-1 Nihonbashi Chuo-ku Tokyo 103-6113, JAPAN  
Tel: +81-3-6910-3957  
<https://www.itoki-global.com/>















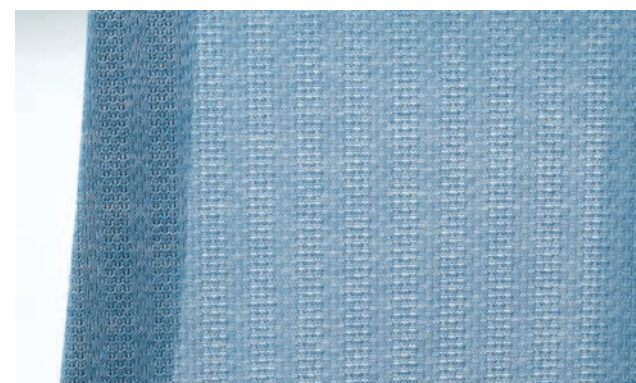
## DESIGN

The backrest's pivot structure enables the chair to smoothly follow the lateral movements of the shoulders and upper body.



The comfortable bucket seat design hugs and stabilizes the lower torso.

The stylish yet functional monoform design provides good support for your lower back and looks like the back and the seat are one.



Japanese kasuri-style fabric will give a casual feel to the interior of your office.



## FUNCTION

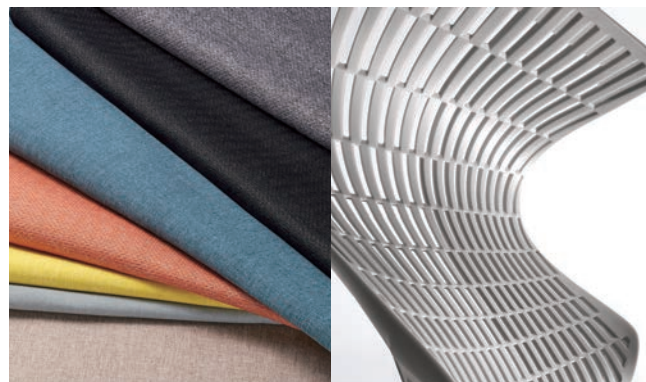
Back and seat tilt up to 20 degrees in the ideal angle, with the ankle serving as fulcrum.



The armrests can be slid forward and back, moved up and down, and rotated in and out using just one lever.

The lumbar support traces and supports the S-curve of the spine to ensure perfect posture and reduces the stress on your lower back.

\*Only on models with lumbar support.



A wide variety of materials and colors are available for more coordination at workplace.



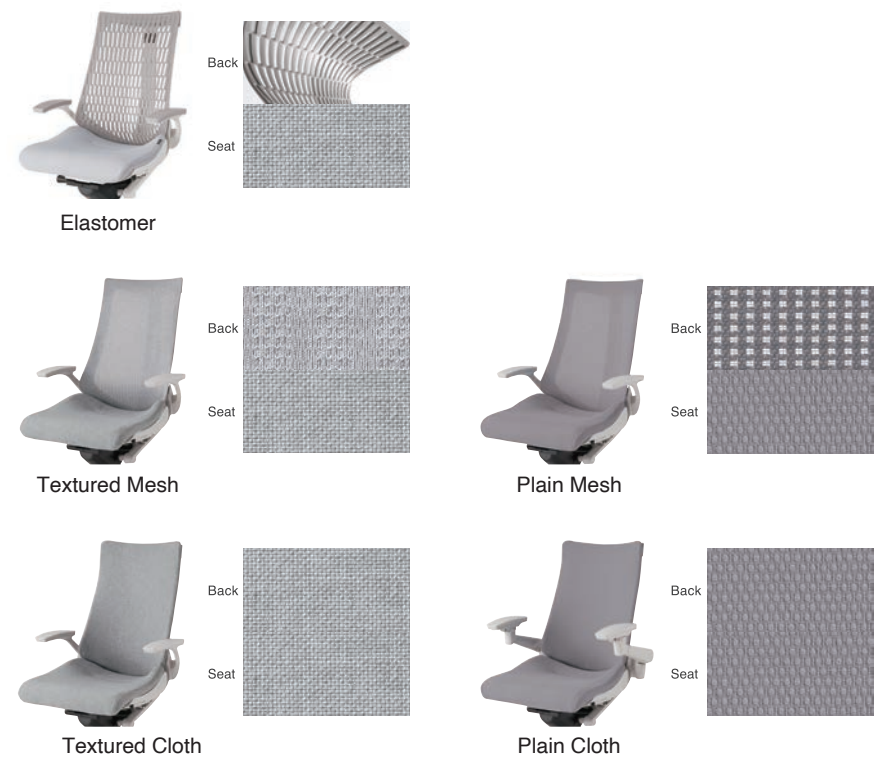
The new standard in task chairs for maximizing work performance.

“Active and Adjustable” were the key concepts that guided us in the development of this stylish task chair which we created to maximize both comfort and productivity. Flexible by design, the chair follows your posture to comfortably support you whether you’re working hard or taking a break. Take a seat and experience the difference.

STATEMENT OF LINE / DIMENSION



MATERIAL



COLOR

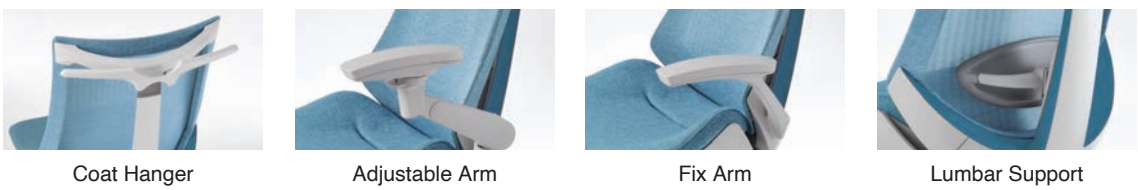
Frame & Arm Back



Fabric Color



ACCESSORY



LEG TYPE



REPLACEMENT

